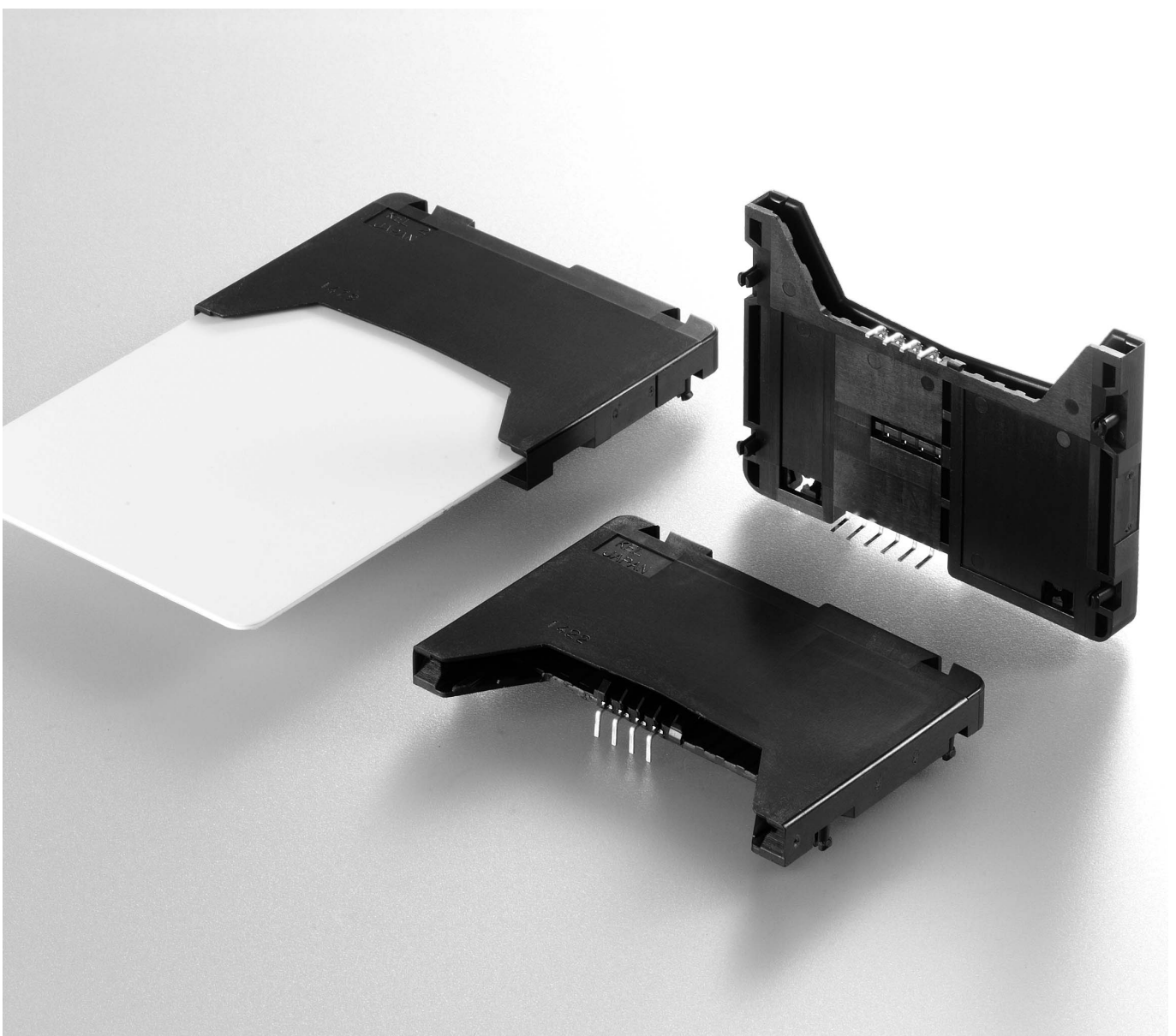
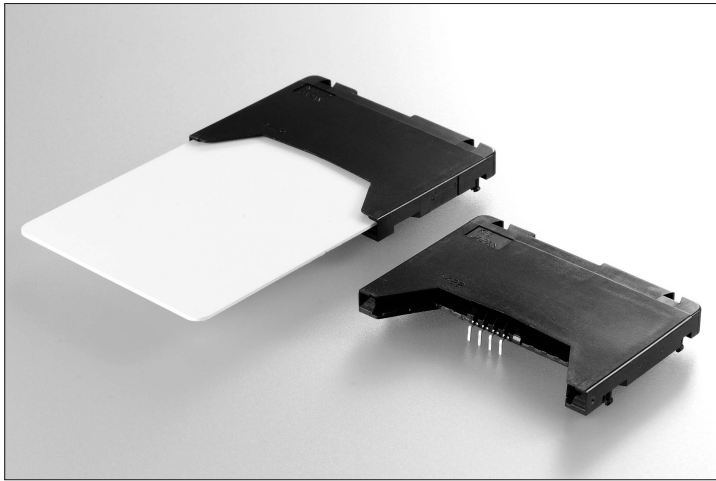


**IC Card (Smart Card) Connector  
Landing Contact DIP Solder Type**

# ISC5 SERIES





### FEATURES

- Conforms to ISO/IEC 7816 standards
- Simple structure
- Original "Seesaw" contact design
- Ultra low profile with 5.3mm(0.209") height
- With card detection switch
- Highly durability for IC card insertion/withdrawal (200,000 times min. guaranty)
- DIP solder terminals
- With positioning and retention hooks
- RoHS compliance

### SPECIFICATIONS

- Insulator material : Glass-filled PBT (UL94V-0), Black
- Contact material : Copper alloy
- Contact plating : Contact area ; 0.38 $\mu$ m min. Gold over Nickel  
Terminal area ; 0.03 $\mu$ m min. Gold over Nickel
- Detection switch : Copper alloy
- Switch plating : Contact area ; 0.38 $\mu$ m min. Gold over Nickel  
Terminal area ; 0.03 $\mu$ m min. Gold over Nickel
- Current rating : Contact ; 1A per contact  
Detection switch ; 1mA to 50mA (20V max.)
- Contact resistance : Contact ; 40m $\Omega$  max.  
Detection switch ; 100m $\Omega$  max.
- Dielectric withstanding voltage : 650V AC for 1minute
- Insulation resistance : 1,000M $\Omega$  min. at 500V DC
- Operating temperature : -40 $^{\circ}$ C to +85 $^{\circ}$ C

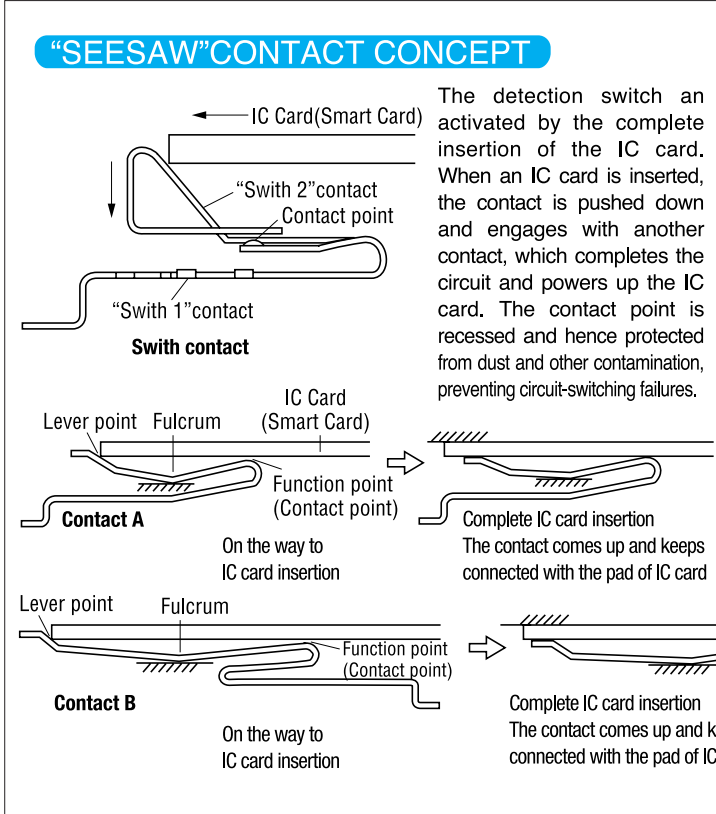
**ORDER CODE**

ISC5-08 S-F

- **F** : RoHS Compliance
- Guide type  
● **S** : Short
- Number of contacts  
● **08** : 8 pin
- Series name  
● **ISC5** : Landing contact DIP solder type for IC card (Smart card) connector (Conforms to ISO/IEC 7816 standards)

### APPLICATIONS

POS terminals, Automatic teller machines (ATM), TV set top boxes, Dummy terminals, Electronic toll collection (ETC), Vending machines, Ticket machines, Medical ID systems, Electronic wallet card reader, ID/Access control, etc



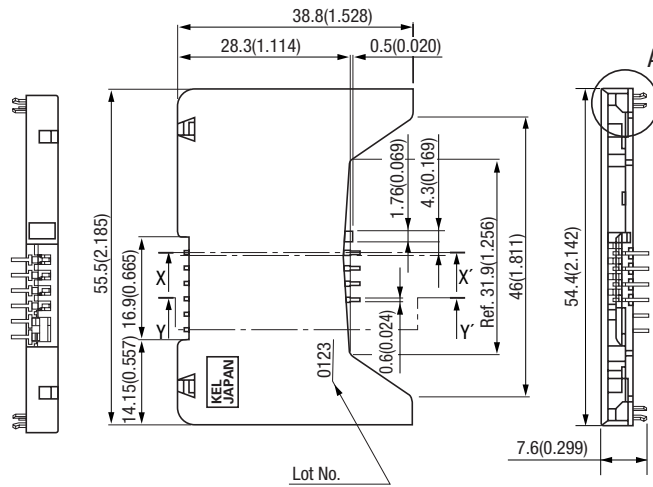
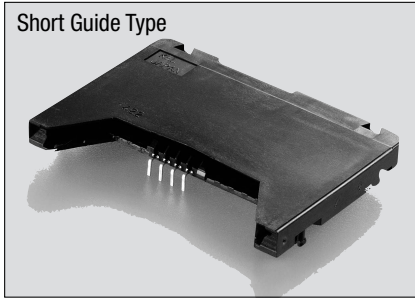
In the case of incomplete insertion or partial withdrawal of an IC card. the contacts do not touch the IC card. When the edge of the IC card reaches the lever points, the contact points lift and touches the IC card pad area with a short wiping action. This feature is a unique KEL concept.

ISC5 series is composed of a combination of Contact A(outside)and Contact B(inside).

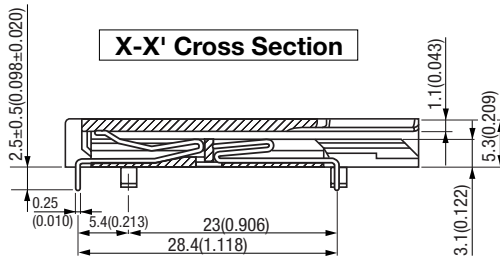
ISC5-08S-F (Short Guide Type)

Unit:mm(inch)

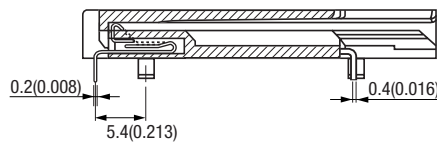
Short Guide Type



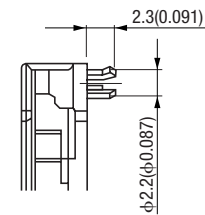
X-X' Cross Section



Y-Y' Cross Section



Detail of section A

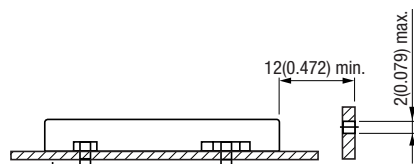


Packaging style
Tray

Product Table

No. of contacts	Part Number	Number of packaging
8	ISC5-08S-F	15

\* It is recommended that the connector be located 12mm or more from the card insertion opening of the equipment that the connector is used in. This 12mm or more dimension, from the outside of the opening to the leading edge of the connector, prevents the card from being displaced by vibration.



Printed Circuit Board Layout (Component Side View)

