

貫通型端子盤



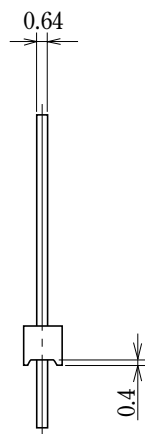
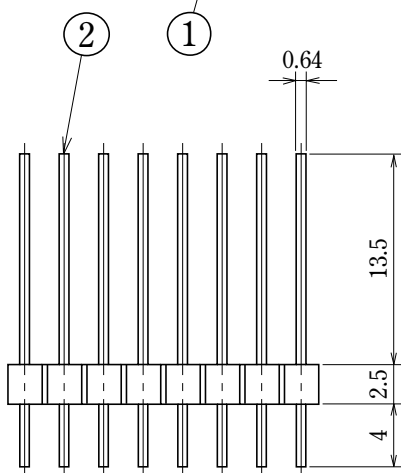
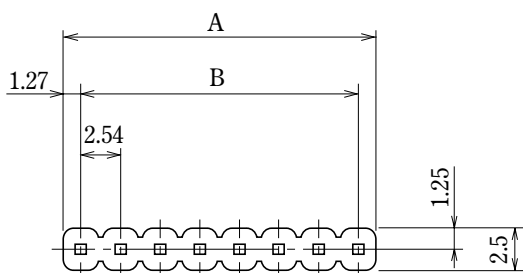
Through-type Terminal Block

ピッチ/Pitch 2.54mm

型名 Type Number	F3007
定格 Rating	AC250V 4A
絶縁抵抗 Insulation Resistance	500V 1000MΩ以上 DC500V 1000MΩ and over
耐電圧 Withstands Voltage	2000V 1分間以上 AC2000V 1 minute and over

一般公差/General Tolerance ±0.5

尺度/Scale ^{2/1} 単位/Unit mm



貫通型

ワイヤラッピング用

● 注文方法：型名 ———— 極数 P.

● Ordering Form : Type No. No. of Poles(P)

■仕様/Specification.

部番/Part No.	名称/Part Name	材質/Material	規格/Standard	寸法/Size	処理/Treatment	備考/Remark
1	基板 Base	PBT	UL			黒色 Black
2	導電ピン Terminal	黄銅 Brass	C2700W		スズメッキ Tin-Plated	

極数/Poles	1P	2	3	4	5	6	7	8	9	10	11	12	13	14	15	16	17	18	19	20	21	22
A	2.54	5.08	7.62	10.16	12.70	15.24	17.78	20.32	22.86	25.40	27.94	30.48	33.02	35.56	38.10	40.64	43.18	45.72	48.26	50.80	53.34	55.88
B	—	2.54	5.08	7.62	10.16	12.70	15.24	17.78	20.32	22.86	25.40	27.94	30.48	33.02	35.56	38.10	40.64	43.18	45.72	48.26	50.80	53.34

極数/Poles	23	24	25	26	27	28	29	30
A	58.42	60.96	63.50	66.04	68.58	71.12	73.66	76.20
B	55.88	58.42	60.96	63.50	66.04	68.58	71.12	72.66